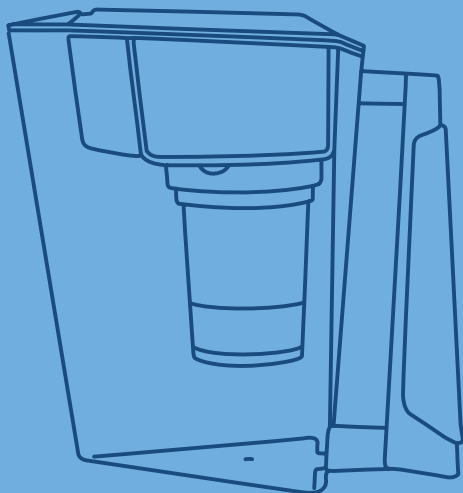


MAUNAWAI® KINI



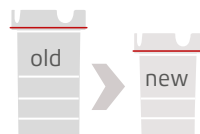
KINI

EN

Jug

Assembly and
instruction manual

Over 20 different ceramics in our MAUNAWAI® cartridge



The full range of ingredients is used in all our filter cartridges, only in different mixtures and proportions.

The new ceramic shape reduces the volume of material used, resulting in smaller filter cartridges.

All materials are in ceramic form now

For the new cartridges we provide all materials that were previously used in granulate shape, now also in ceramic shape. The ceramics are manufactured in a special, complex process.

The ceramic matrix will be porous, but still mechanical Stable. This increases the surface for the Filtering and the water can be provided with minerals more effectively.

New elements

We also have added new elements like e.g. precious shungite. The fullerenes

of shungite develop Catalytic properties that promote the Oxidation of chemical connections.

New infrared bio-ceramic

This bio-ceramic works according to the FIR (far infrared) principle means – far below what is visible light. The ceramic permanently radiated Infrared that resonates with the H₂O molecules and other organic structures. This will make the water molecules practically Energy charged.

The interplay of the small ceramic spheres makes MAUNAWAI® water so special. These ceramic spheres allow

the filtered water to absorb the minerals and trace elements required for its hexagonal structure, thereby regenerating itself at a subtle level.

The most important elements

Alkaline Chlorine Ball · HSW Ball · HSK Ball

Reduce the lime content

PI Ceramics · Turmalin · Quarz

Energize and form a natural water structure

Zirkonien Ball · Zeolith Ceramics

Alkalize the water–

it becomes more basic

Antimicrobial ceramics

Stabilize the water

EM Ceramics

Ensures the balance between the effective microorganisms

Magnetit Ceramics

Naturally polarizes the molecules

Hydrogen Ball · Bio Ceramics

Final restoration of natural balance

Gemstones (Rock crystal, amethyst, rose quartz) Harmonize water

Coconut granular activated carbon

Only 5,5 grams of activated carbon have a Surface similar to the size of a football field (6,400 m²). It is this extreme large surface area that allows for carbon filters to remove contamination and other substances very effectively. The cartridges include 60g



We use the positive properties of shungite in our MAUNAWAI® pad.

activated carbon granules. This corresponds to a surface area of approximately 60,000 m².

During this process the water is not changed in its chemical composition. The minerals remain in the water thus the readings of TDS devices under certain circumstances might not change.

What is shungite?

Shungite is considered a healing stone and is also said to be extremely effective as a talisman. It is used for **mineralizing and purifying water**, as room and body decoration, and for relaxation and massage.

We use shungite grit to treat and revitalize our MAUNAWAI® water. It has a carbon content of 95–98% and contains a high concentration of **fullerenes**, which are crucial to shungite's beneficial properties, as they bind free radicals and help structure the water.

CONTENTS

- 2 | Over 20 different ceramics in our MAUNAWAI® cartridge
- 4 | Parts Supplied
- 5 | MAUNAWAI® KINI
- 6 | Preparation**
- 7 | Assembly instructions**
- 8 | Care**
- 8 | When you are away**
- 9 | Changing the filters**
- 10 | Capacity of the components
- 10 | Filtering times
- 10 | Warranty
- 10 | Liability
- 11 | Troubleshooting
- 14 | Dimensions Jug
- 15 | Replacement interval table
- 16 | Contact us

Parts Supplied



Lid



Cartridge Lid



MAUNAWAI® pad



PI-filter cartridge

Filter modules

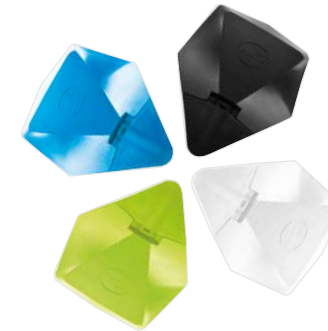


Filling reservoir



Storage reservoir

MAUNAWAI® KINI



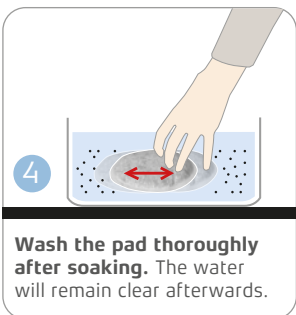
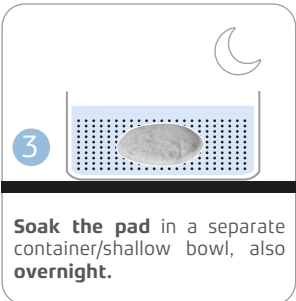
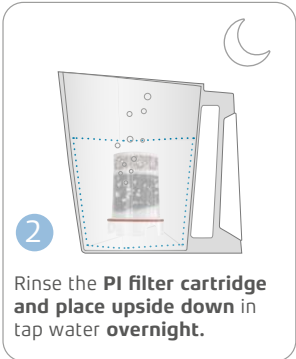
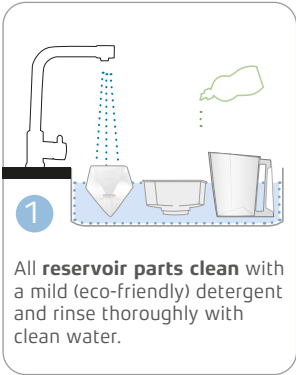
It is perfect for the small household, traveling or the office. Thanks to its unique design, it is not only practical and easy to use, but a decorative item for your home.

Kini is available in the colors light blue, white, black and green.

MAUNAWAI® stands for exceptionally pure water and high quality. In order to not only maintain this standard, but to surpass it, we thought it is time for a new look.

Therefore, a group of design professors of the renowned University of Coburg designed the Kini jug. Its crystalline shape reflects the clustering of the MAUNAWAI® water – pure, clear and ideally composed.

However, this is not the only change. With Kini we celebrate the premier of our first water filter system that has been entirely produced in Germany – from the design to the finished product.



PREPARATION

Before you begin assembly, please ensure that you carry out the following preparatory steps: Remove all packaging from the system and from both filters.

Note:

Never use soap or cleaning materials for the MAUNAWAI® Jug, the PI filter cartridge and the MAUNAWAI® pad.

Avoid boiling water when cleaning or using the cartridges.

Only use soft cleaning cloths to avoid scratches on the plastic parts.

Only use drinking water or tap water that is suitable and approved for human consumption.

1 Clean all the reservoirs and other parts of the system – but not the two filters – with an eco-friendly detergent and rinse them thoroughly with clean water.

2 **Rinse** the cartridge thoroughly under water to remove the black color from the activated carbon. Place the PI filter cartridge **upside down in tap water overnight**. **Shake** the cartridge and vigorously spray it with water from the faucet. Never use it dry.

3 **Soak the pad** in a separate container/shallow bowl, also **overnight**. The noble shungite in the pad will initially color the water black.

4 Therefore, **wash the pad thoroughly after soaking**; the water will remain clear afterwards.

ASSEMBLY

After these preparations it is very simple to assemble your MAUNAWAI® Jug as follows:

1 Push the PI filter cartridge firmly into the filling reservoir (the inner reservoir of the jug).

2 Place the soaked MAUNAWAI® pad (see preparation) into the top of the PI filter cartridge. Click the lid onto the filter cartridge to keep the MAUNAWAI® pad in place.

Note: Never insert a dry (i.e. firm) MAUNAWAI® pad into the cartridge.

Make sure that the PI filter cartridge is upright and fits firmly into the reservoir. You may need to apply some pressure to get the filter to sit properly in the reservoir.

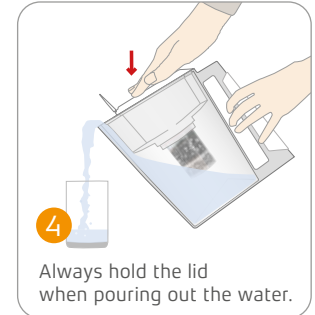
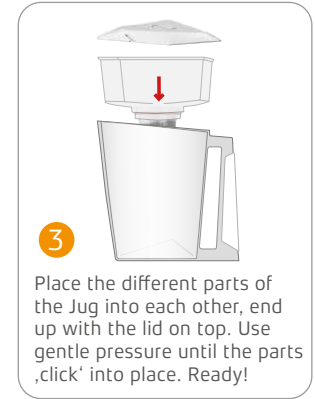
Where possible, only touch the filter and especially the MAUNAWAI® pad with clean hands or household gloves, to ensure the best possible level of hygiene.

3 Place the filling reservoir into the storage reservoir. **Filter some 4–5 litres of water** until the water is completely clear, without any cloudiness. Do not drink the first five litres; use them for something else, such as watering your plants.

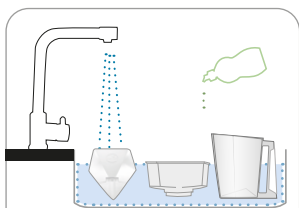
Now place the Lid firmly on the the jug. Use gentle pressure until the parts ,click' into place.

4 **Note:** Always hold the lid when pouring out the water.

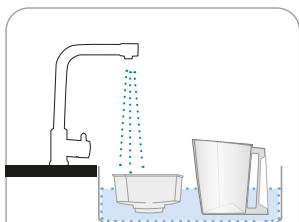
Now your MAUNAWAI® Jug is ready to use.



CARE



Clean all the reservoirs and parts of the system – but not the two filters – with organic cleanser.



Clean all the reservoirs weekly.

Tip:

Take your MAUNAWAI® JUG with you when you travel and enjoy it with others.

- Do not expose the MAUNAWAI® JUG to direct sunlight. The darker the place where it is kept, the better.

- Filter at least 1–2 litres per day.

- Wash the water tank at least once a week. We do **not** recommend using a dishwasher.

- To **clean the empty reservoir** (without the MAUNAWAI® pad and cartridge in it) use organic cleanser with boiled water or vinegar water for best results.

- Do not use scouring agents or abrasive sponges to clean the plastic parts, as these can damage the surface. Dry with a soft cloth.

- No special care is required for the **MAUNAWAI® pad** other than replacement at regular intervals.

- No special care is required for the PI filter cartridge other than replacement at regular intervals. The system works best if you filter at least 1–2 litres of water a day.

- **If you are away for a short time:** If you are not able to use the system for 2–10 days, you can store it in the fridge. If the water tastes unusual, empty the system and fill it again until the usual pleasant taste comes back.

- **If you are away for more than two weeks** we recommend that you replace the PI filter cartridge and the MAUNAWAI® pad.

CHANGING THE FILTERS

The life of the components depends on how much they are used and can vary according to water quality.

The more contaminated the water, the shorter the lifespan of the filters.

With heavily contaminated water and a high level of use, change the PI filter cartridge every month and the MAUNAWAI® pad as required.

If the water is of average quality the PI filter cartridge should be replaced after two to three months.

MAUNAWAI® JUG PI filter cartridge:

2 – 3 months

MAUNAWAI® JUG MAUNAWAI® pad:

2 – 3 months

We recommend that you regularly replace the components listed above.

The PI filter cartridge is easy to take out: after removing the cartridge lid and the MAUNAWAI® pad you can simply push/pull the PI filter cartridge out of the top water tank.

Check the replacement interval either at the back of the instruction manual or in the leaflet to know when the next replacement intervals is coming up. Just fill in the date when you replaced the filters and the next interval date (according to the quality of your water).

Average life:

PI filter cartridge
2–3 months

MAUNAWAI® pad
2–3 months





Disposal:

You can return the components of the PI filter cartridge to nature by wrapping it with a cloth and hitting it with a hammer.

Remove all plastic parts and dispose of them, alongside the MAUNAWAI® pad, with your regular household waste.

RESERVOIR CAPACITIES

MAUNAWAI® Jug filling reservoir:

0,8 litres

MAUNAWAI® Jug dispenser:

1,6 litres

FILTRATION TIME

Water takes about 4–7 minutes per litre to flow through the filter (depending on the quality of the water).

It can take longer if there is still air in the PI cartridge or MAUNAWAI® pad.

WARRANTY

Two years on all parts of the system, excluding the filters. The guarantee is only granted with a valid proof of purchase.

PI filter cartridges and MAUNAWAI® pads have a limited 30-day guarantee. Please give us the serial number, which can be found on the packaging/box.

If, despite all precautions, a recall is necessary, we will inform you on our website.

LIABILITY

MAUNAWAI GmbH in particular accepts no liability for events unrelated to the MAUNAWAI® water system.

In the event of improper use, all guarantees and warranty claims become null and void.

TROUBLESHOOTING

The water in the filling reservoir flows past the filters into the storage reservoir.

Possible cause:

1. The PI filter cartridge is not correctly located in the reservoir and water can flow past the seals without being filtered.
2. The red sealing ring under the top of the PI filter cartridge is not fitted evenly.

Suggested solutions:

1. Push the PI filter cartridge firmly enough into the filling reservoir to make sure that the red sealing ring is located between the filter and the reservoir.
2. Remove the red sealing ring and fit it again properly.

The water only flows very slowly (more than 20 minutes per litre) through the cartridge, or not at all.

Possible cause:

1. There is air under the MAUNAWAI® pad and in the PI filter cartridge.
2. The activated carbon in the upper compartment of the cartridge can start to stick together and thus form a plug so that water can't flow through.

Suggested solutions:

1. Push the MAUNAWAI® pad sideways with a clean object so that any air underneath it can escape.
2. Remove the PI cartridge, place it up side down beneath running water and shake the cartridge. This will cause the filter material to spread out again and release trapped air. Put the filter back into its place. The water will flow quickly again.

The water has an unusual smell or taste.

Possible cause:

1. The PI filter cartridge has not been sufficiently rinsed.
2. Water of poor quality was used, e.g. water containing high levels of sulphur or manganese.
3. The PI filter cartridge needs replacing.
4. The MAUNAWAI® pad pad is too dry.

Suggested solutions:

1. Run two more jugs of tap water through the filter.
2. Check the quality of the tap water before it is filtered. Rinse the MAUNAWAI® pad again.
3. Replace the PI filter cartridge.
4. Soak the MAUNAWAI® pad in water until it has absorbed as much as possible and is soft. Fill the jug regularly, as this prevents the filters from drying out. If this does not help, replace the pad.

A green coating is visible on the MAUNAWAI®pad, in the top tank and possibly also in the storage reservoir.

Possible cause:

The water contains nitrates and your jug water system is often placed close to a light source. Nitrates promote plant growth. Depending on the exposure to light, algae is encouraged to grow and the nitrates break down. This first coating is usually harmless and does not pose a health risk. Nonetheless, you should clean the water jug with vinegar water immediately.

Suggested solutions:

1. Keep the jug out of direct sunlight and do not place it directly by the window.
2. Clean the water jug.

Change the PI filter cartridge and the MAUNAWAI® pad, and for best results keep the water jug in a dark place.

Do you have any other questions?

Send us an email at: info@maunawai.com or give us a call.



The laboratory tests required for the **CE certificate of conformity** were carried out in accredited laboratories:

- **SGS** Korea Co.,Ltd,
- **Intertek** Certification GmbH,
- **NSF** International USA,
- **Eurofins** Analytical Services Hungary Kft.

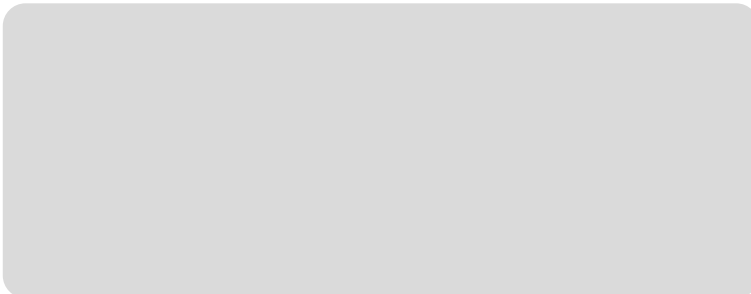
Our management and production system is certified according to **ISO 9001: 2015** and **ISO 50001: 2018**.

CONTACT

MAUNAWAI GmbH
Adolf-Damaschke-Straße 69–70
D-14542 Werder (Havel)
Germany
✉ info@maunawai.com
☎ +49 3327 570880

Or contact the sales partner from whom you purchased the MAUNAWAI® water filter system.

Ihr MAUNAWAI® Händler



B-K-07-15-en

www.maunawai.com