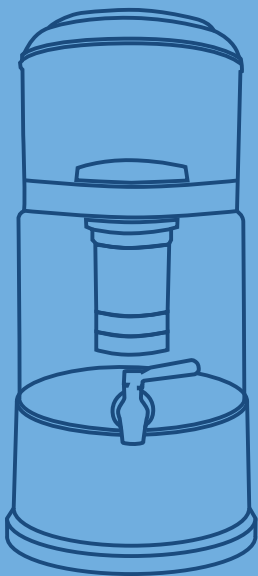


# MAUNAWAI® PIPRIME



# K8

EN

Source

Assembly and  
operating instructions

## LIVING WATER FOR A HEALTHY LIFE!

The word „Maunawai“ comes from Hawaiian and literally means „mountain water“. This is exactly the purpose of the MAUNAWAI filter system: it turns your tap water into „pristine“ mountain spring water.

This technology was developed 60 years ago in Japan to obtain the best drinking water from tap water. The models for this were the great healing springs and life itself. By applying the five **principles – filtration, information, optimisation, harmonisation and biological availability** – the water is not only purified from unwanted substances, but it is also restructured and it thus regains its original cluster form.

After its long journey through the municipal water pipes, the water can now slowly percolate through the multi-layered system of the MAUNAWAI® filter – without pressure and without electricity, modelled on nature!

The most important MAUNAWAI® filter stages:

The **ceramic filter** is the pre-stage  
2 filter for coarse residues from

the water pipe. It filters out dust, rust, suspended solids, colour and odour. Due to the pore size of just **0.1 µm**, bacteria cannot pass through the filter.

The quality and performance of an activated carbon filter is determined by the bonding capacity of the filter material and the flow rate.

In contrast to conventional activated carbon blocks, the flow rate of MAUNAWAI® filters is significantly reduced. This supports the increased bonding capacity of the granulate used. The **high-tech activated carbon made from coconut shells** removes contaminants such as chlorine, pesticides, heavy metals, and many other impurities. In the threshold range of substances that are difficult to bind, such as copper, zinc, and antibiotics, MAUNAWAI® filters prove to be advantageous.

At the **heart of** the MAUNAWAI® filter, more than 20 different ceramics work with precise coordination and dosage. In a special and complex process, a porous, yet mechanically stable **ceramic matrix** is produced. Here, old clay is burned at temperatures of

around 1,000 degrees Celsius with natural properties and information that trigger an ion exchange and long-wave infrared radiation in the water. In this way, unsuitable (unnatural) information is removed and the molecular structure (cluster) of the water is restored to its „original state“.

This natural filtration and percolation process (without pipeline pressure) produces the extremely **palatable, soft, and digestible** MAUNAWAI® „spring water“.



*Simply scan the QR code and watch the MAUNAWAI® PIPRIME preparation phase as a video (YouTube).*

### Please pay attention to the following:

The PIPRIME fountain operates using a gentle gravity-fed system.

If air accumulates in the cartridge, it can cause overflow—especially if there are more than 8 liters of filtered water in the glass tank. The glass tank has a total capacity of 10 liters.

Therefore, please ensure that the water level only rises to just above the MAUNAWAI logo. The easiest way to maintain the system is to refill with tap water whenever you dispense filtered water. This keeps the system balanced and ensures reliable operation.

Please also use the **QR code**; it will take you to our video tutorial.

## Over 20 different ceramics in our MAUNAWAI® cartridge



old → new

*The full range of ingredients is used in all our filter cartridges, only in different mixtures and proportions.*

*The new ceramic shape reduces the volume of material used, resulting in smaller filter cartridges.*

### All materials are in ceramic form now

For the new cartridges we provide all materials that were previously used in granulate shape, now also in ceramic shape. The ceramics are manufactured in a special, complex process.

The ceramic matrix will be porous, but still mechanical Stable. This increases the surface for the Filtering and the water can be provided with minerals more effectively.

### New elements

We also have added new elements like e.g. precious shungite. The fullerenes of shungite develop Catalytic prop-

erties that promote the Oxidation of chemical connections.

### New infrared bio-ceramic

This bio-ceramic works according to the FIR (far infrared) principle means – far below what is visible light. The ceramic permanently radiated Infrared that resonates with the H<sub>2</sub>O molecules and other organic structures. This will make the water molecules practically Energy charged.

The interplay of the small ceramic spheres is what makes MAUNAWAI® water so special. Through these ceramics, the filtered water can absorb the minerals and trace elements miss-

ing for its hexagonal structure and thereby also regenerate itself on a subtle level.

### The most important elements

#### Alkaline-Chlorine-Ball · HSW-Ball · HSK-Ball

Reduce limescale

#### PI Ceramics · Tourmaline · Quartz

Energize and create a natural water structure

#### Zirconia ball · Zeolite ceramic

Alkalizes the water – it becomes more alkaline

#### Antimicrobial ceramics

Stabilizes the water

#### EM ceramics

Ensures balance among the Effective Microorganisms

#### Magnetite ceramics

Naturally polarizes the molecules

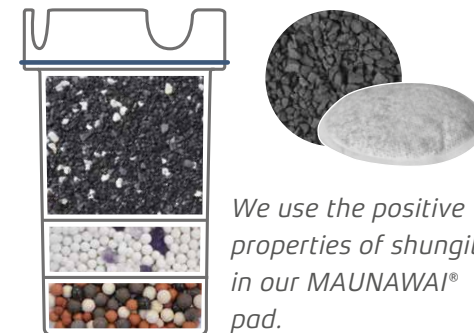
#### Hydrogen ball · Bio-ceramics

Final restoration of natural balance

**Gemstones** (rock crystal, amethyst, rose quartz) Harmonize the water

### Coconut granular activated carbon

Only 5,5 grams of activated carbon have a Surface similar to the size of a football field (6,400 m<sup>2</sup>). It is this extreme large surface area that allows for carbon filters to remove contamination and other substances very effectively. The cartridges include 60g



*We use the positive properties of shungite in our MAUNAWAI® pad.*

activated carbon granules. This corresponds to a surface area of approximately 70,000 m<sup>2</sup>.

During this process the water is not changed in its chemical composition. The minerals remain in the water thus the readings of TDS devices under certain circumstances might not change.

### What is shungite?

Shungite is considered a healing stone and is also said to be extremely effective as a talisman. It is used for **mineralizing and purifying water**, as room and body decoration, and for relaxation and massage.

We use shungite grit to treat and revitalize our MAUNAWAI® water. It has a carbon content of 95–98% and contains a high concentration of **fullerenes**, which are crucial to shungite's beneficial properties, as they bind free radicals and help structure the water.

## TABLE OF CONTENTS

2		Living water for a healthy life
4		Over 20 different ceramics in our MAUNAWAI® cartridge
7		<b>SCOPE OF DELIVERY</b>
8		<b>PREPARATION</b>
		<b>SOAK AND CLEANING</b>
10		<b>ASSEMBLY</b>
12		<b>MAINTENANCE</b>
12		<b>DISUSE</b>
13		<b>FILTER REPLACEMENT/DISPOSAL</b>
14		Oxosanum
14		MAUNAWAI® Water circulation
15		Capacity of parts
15		Filter time
15		Guarantee
15		Liability
16		Fault correction
19		Replacement interval table
6 20		Contact

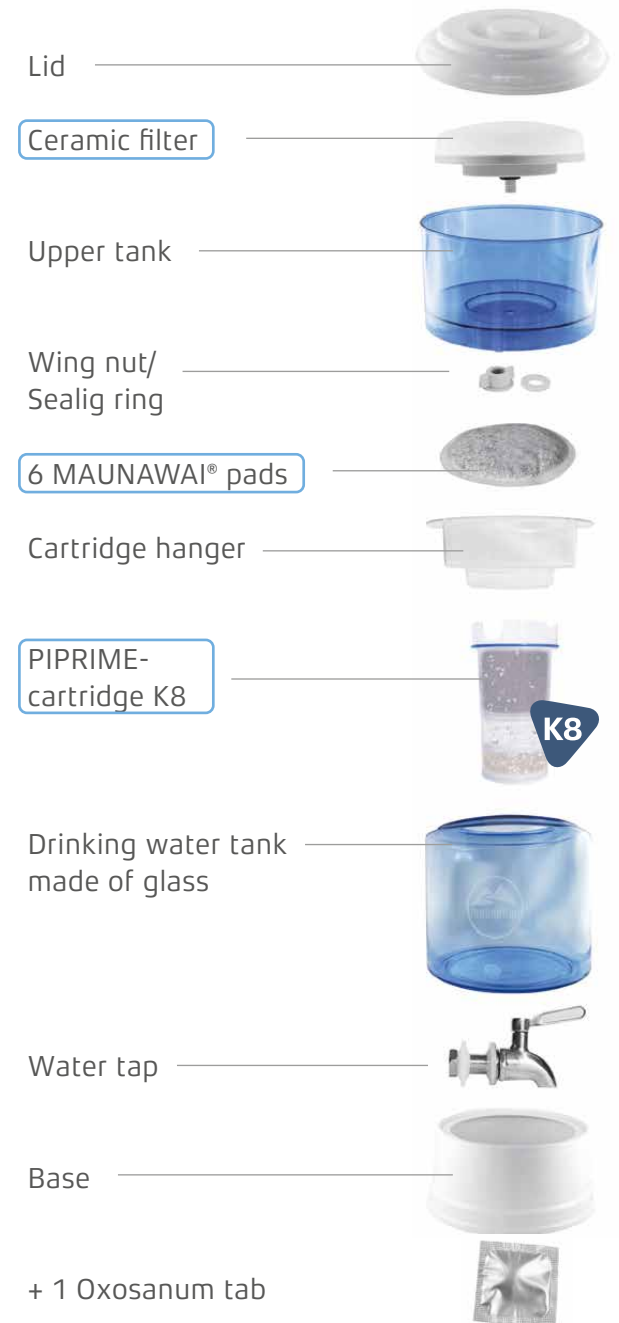
## SCOPE OF DELIVERY

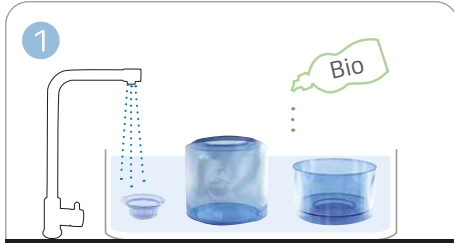
Before assembling your MAUNAWAI® source, please check with the help of the illustration on the right, whether all the parts are available.

**Before the assembly,** make sure you follow the steps below for the preparation:

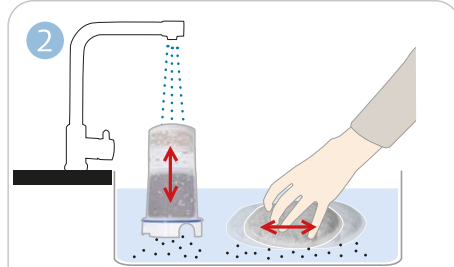
Remove all packaging of the system and the individual filters.

The three filter modules need a soaking phase and all other parts of the water filter system should be cleaned.

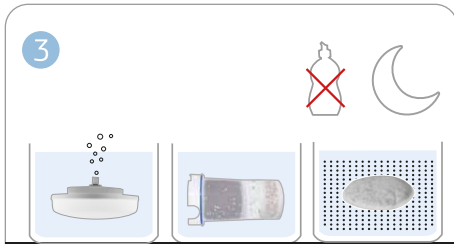




1 Clean all container parts with an organic detergent and rinse them thoroughly with clean water.



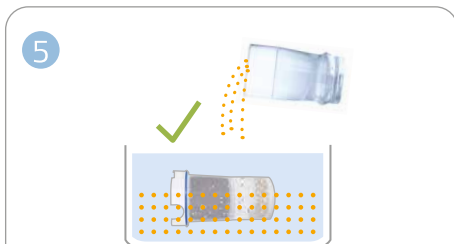
2 Rinse the MAUNAWAI® pad and cartridge thoroughly. The water will remain clear.



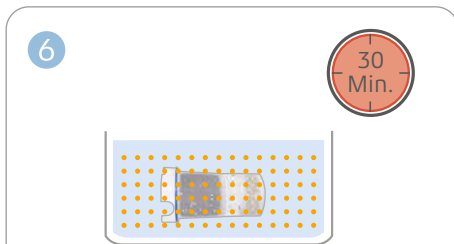
3 Place all filter modules completely covered in tap water overnight.



4 The next day, dissolve the Oxosanum in 200 ml of water and let it stand for 5 minutes.



5 Add the solution to the liquid in which you soak your PIPRIME cartridge.



6 Now leave the cartridge in the solution for 30 minutes.

## CLEANING

1 Clean all container parts of the system except the filters with an organic detergent and rinse them thoroughly with clean water.

### Please note:

Never use conventional soaps or cleaning agents on the MAUNAWAI® source, filter cartridge, MAUNAWAI® pad, or ceramic filter! Do not use boiling water on the PIPRIME cartridges!

Use only soft, clean cleaning cloths to avoid scratching the plastic!

Do not put any parts in the dishwasher!

## SOAK

2 Rinse the MAUNAWAI® pad and cartridge thoroughly. The water will remain clear.

The noble shungite in the pad initially turns the water black.

3 Place **all filter modules MAUNAWAI® Pad, Ceramic filter, PIPRIME cartridge** completely covered in tap water overnight. Never use dishwashing liquid for the filter modules. (Please soak the filter cartridge separately in a separate container).

Hold the ceramic filter under water until the air has completely escaped. Make sure that the filter screw points upwards. The air can escape through the opening in the bottom.

The ceramic beads in the PIPRIME filter cartridge have a lot of air. Therefore, soak well and shake vigorously several times to release any remaining trapped air.

4 The next day, dissolve the Oxosanum in 200 ml of water and let it stand for 5 minutes.

5 Add the solution to the liquid in which you soak your PIPRIME cartridge.

6 Now leave the PIPRIME cartridge in the solution for the remaining soaking time. When inserting the cartridge, avoid contact with unfiltered water and unwashed hands.

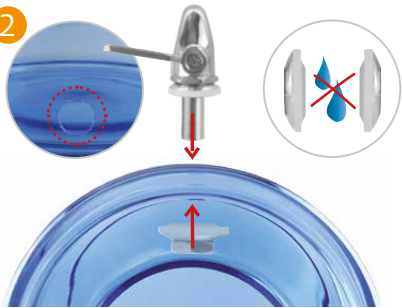
After the preparation is complete, simply assemble your water filter system following the steps below. (page 26 and 27)

1



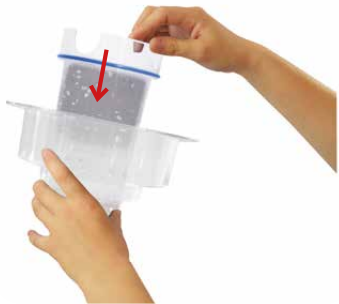
Place the drinking water tank on the base.

2



Install the water tap. Each of the two sealing rings (dry) are attached to the inside and outside of the drinking water tank.

3



Press the filter into the holder from above.

4



Hang the filter cartridge in the glass container and insert the MAUNAWAI® pad.

## ASSEMBLY

1 Place the drinking water tank on the base.

2 Install the water tap. Each of the two sealing rings are attached to the inside and outside of the drinking water tank. The tank should be dry in the area of the silicone seal to avoid leaks later on.

3 Press the filter into the holder from above.

4 Attach the filter unit in the drinking water tank made of glass. Insert the MAUNAWAI® pad in the top side of the cartridge hanger, directly over the PIPRIME cartridge.

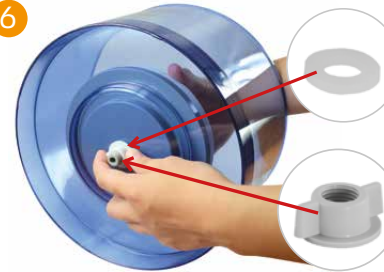
4 Attach the filter unit in the drinking water tank made of glass. Insert the MAUNAWAI® pad in the top side of the cartridge hanger, directly over the PIPRIME cartridge.

5



Insert the ceramic filter in the upper tank from the inside.

6



Slide the sealing ring onto the filter screw on the underside and tighten the wing nut.

7



Set up the upper tank and lid.

8



Fill with tap water and let it run through completely. Now your source is ready for use.

5 Then insert the ceramic filter in the upper tank into the opening provided.

6 Slide the sealing ring on the underside of the tank onto the filter screw. Then screw the filter tight with the wing nut.

7 Place the upper tank on the drinking water tank. The lid closes the upper tank.

8 Now fill tap water into the upper tank and let it run through.

Now your MAUNAWAI® water system is ready for use.

## MAINTENANCE AND DISUSE

- Do not expose the MAUNAWAI® source to direct **sunlight**. The darker its storage location, the more advantageous it is.
  - Filter **at least 1–4 litres per day**.
  - Wash out the upper tank as needed to keep it clean and free of residues. For the glass tank, we recommend an organic cleaner followed by the use of Oxosanum tabs.
  - For **cleaning the containers**, it is best to use the inner side of an organic lemon peel (except for the filter modules).
  - If the white **ceramic filter** becomes discoloured or does not allow enough water to pass through, it can be washed with water and rubbed with a clean sponge to remove any deposits. When rubbing, ensure that you apply even, light pressure to avoid excessive abrasion of the ceramic.
  - No special maintenance is required for the **PIPRIME filter cartridge**, it can only be replaced. The MAUNAWAI® pad does not require any special maintenance either, replacing it is the only option (see Replacing the filter).
- Just as with the first use, soak and place it in the designated area in the cartridge hanger.
- **Short period of disuse:** If you are unable to use the system for 2–3 days, make sure you use it more in the following days. If the water has an odd taste, empty it and refill the system.
  - **In case of disuse for up to 3 weeks**, let some drinking water into the lower tank so that the PIPRIME CARTRIDGE is partially submerged in water and cover the whole system with a cloth. When starting up again, drain the water, put the MAUNAWAI® pad in the water for at least 1 hour and then refill the whole system. If the water tastes odd, replace the PIPRIME filter cartridge.
  - **In case of longer disuse of more than 3 weeks**, we recommend not to continue the use of PIPRIME filter cartridge and to replace it.

## FILTER REPLACEMENT

We recommend replacing the ceramic filter after one year. At the latest, however, it must be replaced if more and more water collects in the upper tank despite cleaning.

Or even if the wall of the ceramic filter has holes through which the water can pass unfiltered.

If you are filtering water that is worse than average, the filter capacity may be significantly lower due to frequent removal of sediments.

The PIPRIME filter cartridge K8 should be replaced after 8–10 months or after 3000 litres of water has been filtered.

The MAUNAWAI® pad should be replaced again in 4–8 weeks, depending on the water quality.

The more polluted the water, the shorter the service life.

In case of water with above-average contamination and simultaneous intensive use, please replace the filters at shorter intervals.

### Average service life of the filter modules:

MAUNAWAI® pad:  
4–8 Weeks

PIPRIME filter cartridge K8:  
8–10 MONTHS

Ceramic filter:  
approx. 1 year

## DISPOSAL

Contents of the PIPRIME cartridge can be returned to nature; place the cartridge in a cloth bag and break it down with a hammer.

Put all plastic parts in plastic waste.

Dispose of ceramic filters and MAUNAWAI® pads as residual waste.

## OXOSANUM



- Very well suited for cleaning
- No active chlorine
- Removes biofilms and germs
- Pharmaceutical grade

Simple and reliable disinfection for your drinking water filter.

One-component tabs

Ingredients:

Biocide initiator: Sodium chlorite  
MMS (passivated), inorganic acid,  
buffer substances

Target active ingredient in tabs:

Chlorine dioxide  $\text{ClO}_2$   
Decomposition product:  
common salt

## MAUNAWAI® WATER CIRCULATION



When you have tapped MAUNAWAI® water, you can immediately refill the tap water in the upper tank.

Always use drinking water or tap water that is suitable and approved for human consumption. Filter the water only under supervision. If you fill in too much water (max. 8 litres), the unit may leak through the drinking water tank.

## CAPACITY OF PARTS

Filling container Plastic: 4 litres

Drinking water tank: 8 litres

## FILTER TIME

The filter and flow time is mainly determined by the ceramic filter.

The flow time of the ceramic filter is approx. 30 to 120 minutes per litre, depending on the filling level and the usage habits.

## GUARANTEE

Two years guarantee for all parts of the system. The filter modules (PIPRIME filter cartridge, ceramic filters) have a limited guarantee period of 30 days.

The guarantee is only granted with a valid proof of purchase.

## LIABILITY

MAUNAWAI GmbH excludes itself from liability, in particular for things that are not part of the MAUNAWAI® water system.

Improper use or application will invalidate any guarantee or warranty claim.



### Dimensions:

Width: 30 cm

Height: 55 cm



A protective cover for your system can be found at [maunawai.com](http://maunawai.com)

## FAULT CORRECTION

### **Problem:**

The water in the upper tank does not flow into the drinking water tank. More and more water collects in the upper tank.

### Possible cause:

1. Sediments clogging the ceramic filter.
2. Air is still present in the ceramic filter, which slows down the water flow.
3. Air is still present in the PIPRIME filter cartridge.

### **Suggested solutions:**

1. Clean the ceramic filter as described on page 24 (point 5).
2. Immerse the ceramic filter under water with the screw thread facing upwards until the air in the filter has escaped.
3. Air may still be present in the PIPRIME filter cartridge. Please take out the filter cartridge and shake it well, and let tap water run into it again from below.
4. Check whether something mechanical may be interrupting the flow.

### **Problem:**

Water is leaking out of the drinking water tank.

### Possible cause:

1. The seal of the water tap has weakened.
2. The drinking water tank is overflowing because the capacity has been exceeded.
3. There is still too much air in the PIPRIME filter cartridge.

### **Suggested solutions:**

1. Clean the seals on the tap and also the drinking water tank. Make sure that the container is dry when installing the tap.
2. Ensure that the capacity (8 litres) of the drinking water tank is not exceeded.
3. Take out the filter cartridge and shake it well, and let tap water run into it again from below.

### **Problem:**

The water has an unusual odour or taste.

### Possible cause:

1. Poor quality water was used, e.g. sulphurous water or water with a high manganese content.
2. The MAUNAWAI® pad is used up or has been reinserted and not soaked enough
3. The PIPRIME cartridge is used up.

### **Suggested solutions:**

1. Filter the same water a second time.
2. Replace the MAUNAWAI® pad, before doing so please soak overnight.
3. Replace the PIPRIME filter cartridge.
4. Use Oxosanum as described.

### **Problem:**

The ceramic filter in the upper tank has a green layer.

### Possible cause:

Your tap water contains nitrate and the MAUNAWAI® system is close to a light source. Nitrate is a plant fertiliser. Due to the nutrient medium and the incidence of light in the upper tank, algae growth is promoted and the nitrate is degraded. This first layer is usually harmless and does not pose a health risk. However, you should then clean the unit immediately.

### **Suggested solutions:**

1. Clean the unit. Reuse the Oxosanum tab as described in the instructions. If the effect is not immediate or the green layer remains in the PIPRIME cartridge, replace the filter modules immediately.
2. Do not place the unit near a light

source or protect the upper tank from sunlight.

Do you have any further questions?

Please write us an email: [info@maunawai.com](mailto:info@maunawai.com) or give us a call.





The laboratory tests required for the **CE certificate of conformity** were carried out in accredited laboratories:

- **SGS** Korea Co.,Ltd,
- **Intertek** Certification GmbH,
- **NSF** International USA,
- **Eurofins** Analytical Services Hungary Kft.

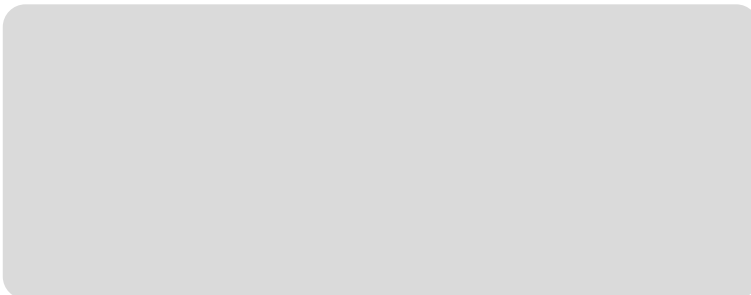
Our management and production system is certified according to **ISO 9001: 2015** and **ISO 50001: 2018**.

## CONTACT

MAUNAWAI GmbH  
Adolf-Damaschke-Straße 69-70  
D-14542 Werder (Havel)  
Germany  
✉ info@maunawai.com  
☎ +49 3327 570880

*Or contact the sales partner from whom you purchased the MAUNAWAI® water filter system.*

## Ihr MAUNAWAI® Händler



B-P-05-08-en

[www.maunawai.com](http://www.maunawai.com)